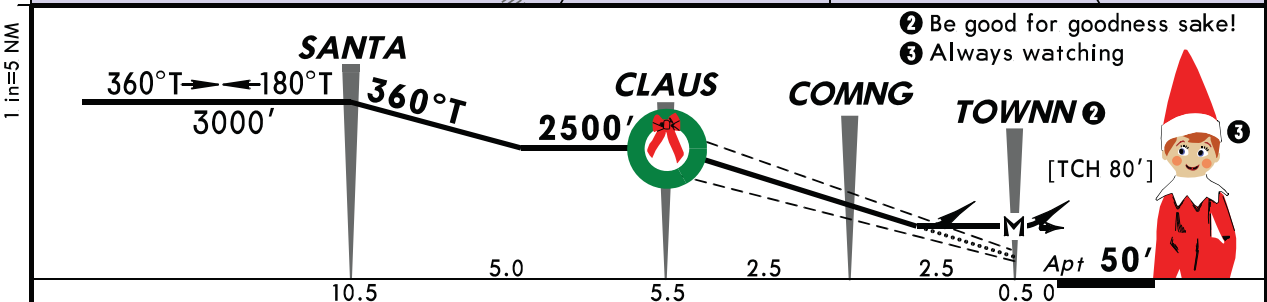
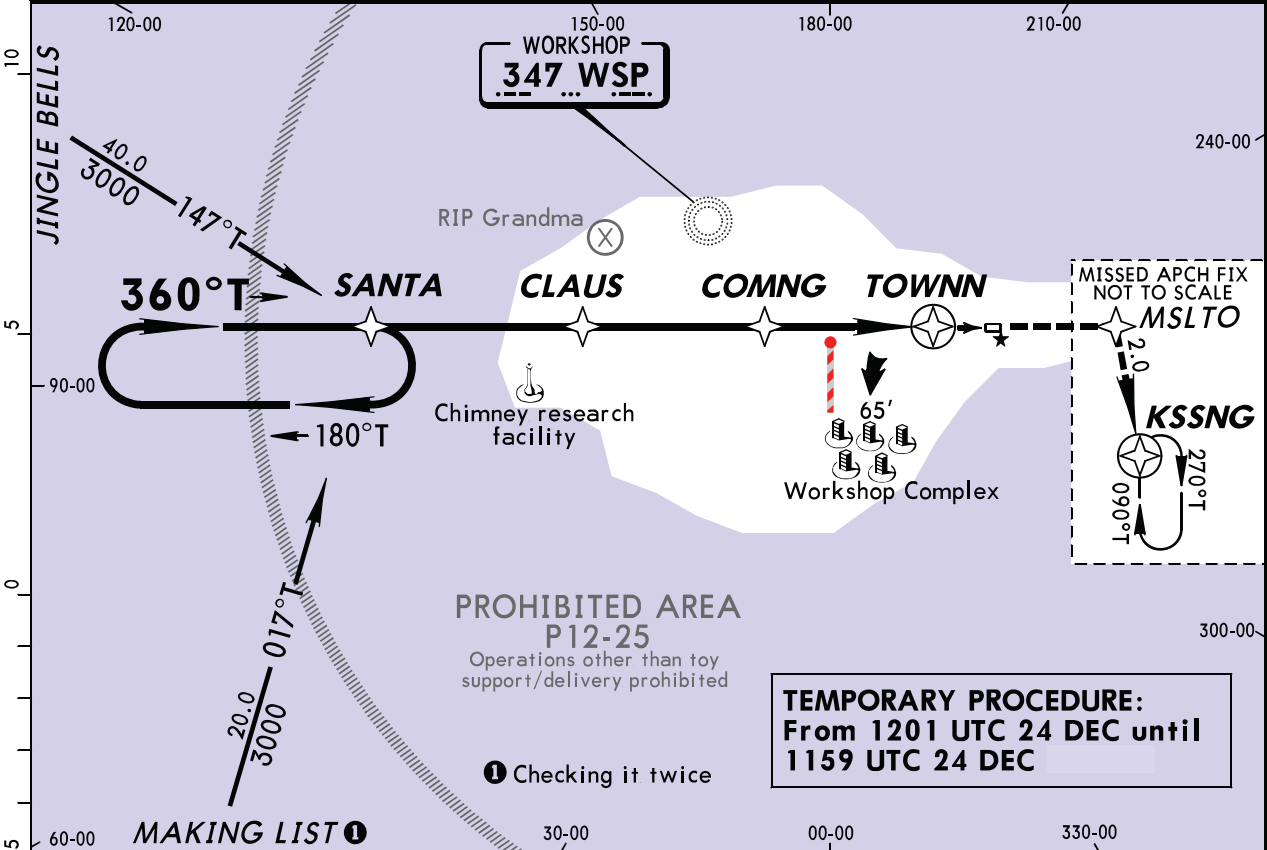




BRIEFING STRIP™

ARCTIC Center		NORTH POLE Approach		WORKSHOP Traffic	
122.8		122.8 when ELFCOM inop.		122.8 when ELFCOM inop.	
RLS (Reindeer Landing System)	Final Apch Crs 360°T	Minimum Alt CLAUS 2500' (2450')	RLS DA(H) (CONDITIONAL) 250' (200')	Apt Elev 50'	Rwy 18 50'
MISSED APCH: Climb to 2500' direct MSLTO, then RIGHT turn direct KSSNG and hold.					<p>1000'</p> <p>MSA WSP NDB</p>
Alt Set: INCHES Trans level: FL 180 Trans alt: 18000'					
CAUTION: Departures may be illuminated by blinding red nose. CAUTION: Supersonic heavy departures; non-sleigh traffic discouraged. 1. Reindeer practice flights year-round. 2. Flights in the vicinity may be conducted under the influence of egg nog. 3. No unapproved winter operations. 4. Postal flights with letters to Santa receive priority sequencing. 5. Reindeer and Elves on and in vicinity of runway. 6. Runway does not maintain stationary location.					



Speed (Reindeer operating)	4	5	6	7	8	9	SALS TINSEL TWINKLE	2500'	D	MSLTO
Glide Path Angle	[7.0°]	N/A	N/A	800	998	1140				
MAP at TOWNN										
1 If Dasher sick, reduce speed by 2 reindeer										

MERRY OPS	STRAIGHT-IN LANDING RWY 18						LOC		CIRCLE-TO-LAND		
	RLS DA(H) 250' (200')			LOC (Rudolph Out) DA(H) 400' (350')			2 or more reindeer inop MDA(H) 500' (450')		Authorized only when Rudolph available		
	FULL	TINSEL out	TINSEL/TWINKLE out	TINSEL out	TINSEL/TWINKLE out	TINSEL out	TINSEL/TWINKLE out	Rdr in Svc	MDA(H)		
	6							6	750' (700') -2		
7	RVR 0	RVR 40 or 3/4	RVR 50 or 1	RVR 40 or 3/4	RVR 50 or 1	RVR 60 or 1 1/4	1	1 1/4	2	7	650' (600') -1 1/2
8										8	550' (500') -1
9										9	450' (400') -1

CHANGES: Noel procedure.



Apt Elev **50'**
N 90.0 W 0.0

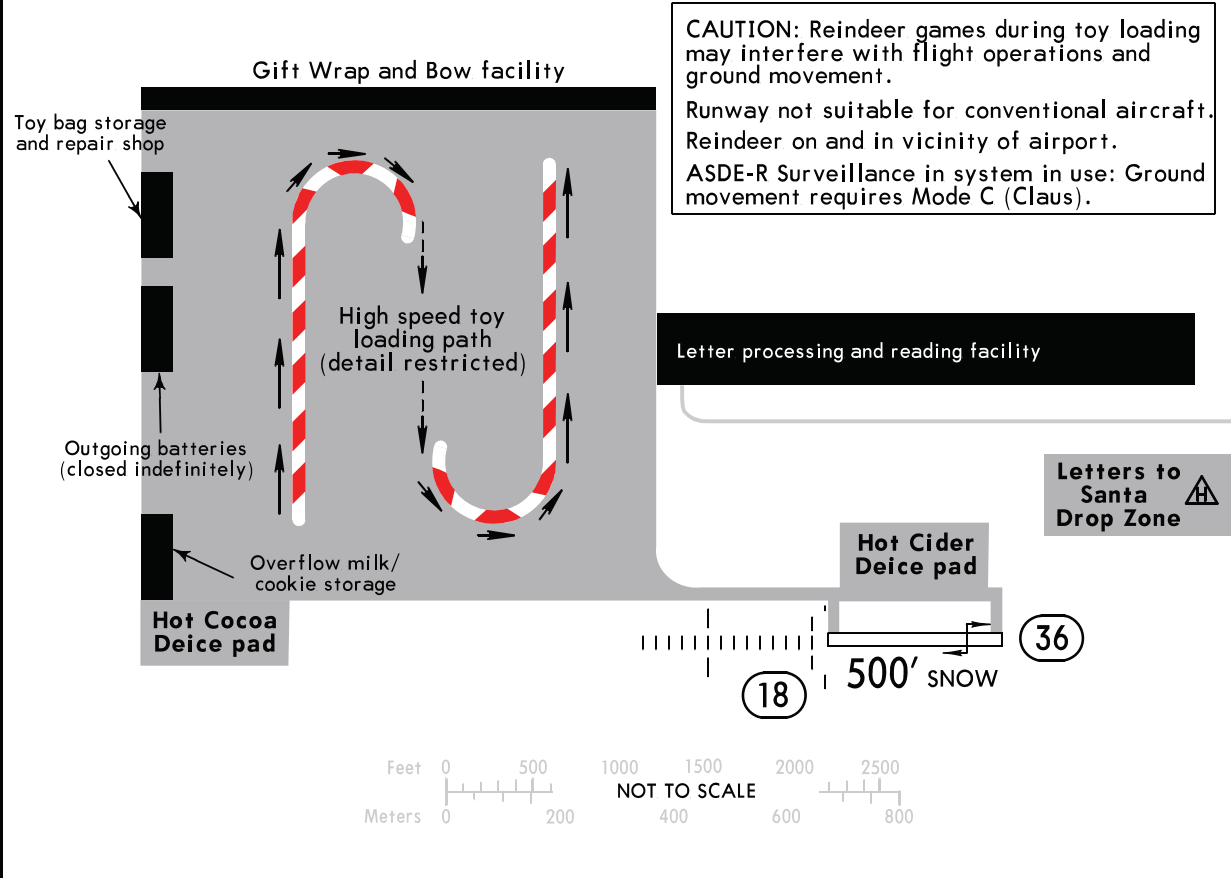
JEPPESEN

12-25

24 Dec 1201Z

**NORTH POLE VILLAGE
SANTA'S WORKSHOP INTL**

WORKSHOP Traffic 122.8 when ELFCOM inop.	NORTH POLE Approach 122.8 when ELFCOM inop.	ARCTIC Center 122.8
--	---	-------------------------------



CAUTION: Reindeer games during toy loading may interfere with flight operations and ground movement.
Runway not suitable for conventional aircraft. Reindeer on and in vicinity of airport.
ASDE-R Surveillance in system in use: Ground movement requires Mode C (Claus).

ADDITIONAL RUNWAY INFORMATION

RWY	RL ① TINSEL ② TWINKLE SALS Reindeer vis Range (RVR)	USABLE LENGTHS		TAKE-OFF	WIDTH
		Threshold	Landing Beyond		
09 ① 27		500'	450' 500'	500'	100' 33m

- ① Only hoof brakes permitted on runway.
 - ② Illuminated Dec 1 - Dec 31 annually.
- Decorated trees at both ends of Rwy may be mistaken for Rwy lighting.

TAKE-OFF		FOR FILING AS ALTERNATE	
Rwy 18		RNAV (GPS) Rwy 18	
Adequate Red Nose Illum.	Under-the-weather Nose Illum.	Other	
6 - 7 Rdr	RVR 12	800-2	NA
	RVR 7		
8 - 9 Rdr	RVR 0		



'Twas the night before Christmas and all 'round the field
Santa's helpers were carrying all they could wield
'Twas time to pitch in and load up the sleigh
With every possible gift for work and for play
"All hands to your stations" Santa did say
"For it's almost time for the biggest of days"
The day of the year and the fruit of our work
Is almost upon us, so there's no time for a quirk
The manifest lists the destination of each toy
The fastest of sleds bound for each girl and boy
As the takeoff begins, the sleigh starts to scream
To deliver the toys as the children do dream
Back at the pole, a big collective sigh
The hard work is over, save for the big guy
He's good at it though, it's not his first jaunt
Bringing the toys you told him you want

